



My Sky

Strato

**PHILIPS**



The Sky of  
Fatimah Shah  
Islamabad  
16/12/03

The Sky of  
Severin Wucher  
Leipzig  
09/01/04

The Sky of  
Heidi Ehntschke  
Baltic Sey  
15/12/03

The Sky of  
Oliver Reiners  
Oldenburg  
19/12/03

The Sky of  
Florian Schmitt  
München  
15/01/04

The Sky of  
Angelika Kiéck  
Hamburg  
29/12/03

The Sky of  
Felix Clebowski  
Scotland  
12/09/03



The Sky of  
Monika Stoeckl  
Haarlem  
17/12/03

The Sky of  
Leonard Koerner  
Capetown  
02/12/03

The Sky of  
Sue Jade  
Tokyo  
17/12/03

The Sky of  
Frank Schmitz  
Frankfurt am Main  
15/12/03

The Sky of  
Laurin Kofler  
Bozen  
16/12/03

The Sky of  
Philipp v. Keisenberg  
Dornbirn  
28/09/03

## Make my sky

Light does not only make our world visible to us, but also has the effect of influencing man on all conceivable levels: The rhythms of life, emotion, mood, sense of time, activity and thus the general sense of well being. We relate to nature through the dynamics of daylight with its ever-changing visual character.

The modular light system Strato brings this special character of outdoor light indoors: Shops, showrooms, working areas and public spaces.

Strato adds emotion to the functionality of light, by either providing a gentle transition from warm white to daylight colour temperatures (Strato Sky), or by use of the eye-catching effect of the transition between the colours of the rainbow (Strato Rainbow).

In this manner, Strato makes a positive contribution to our well being, health and emotional balance, thus enhancing motivation, productivity or simply pleasure – after all, who says that pleasure is not useful?

The different photographs of skies in this brochure have been collected by Philips Lighting from people from all around the world to illustrate the idea behind Strato: "Make your own sky."

# Strato Sky

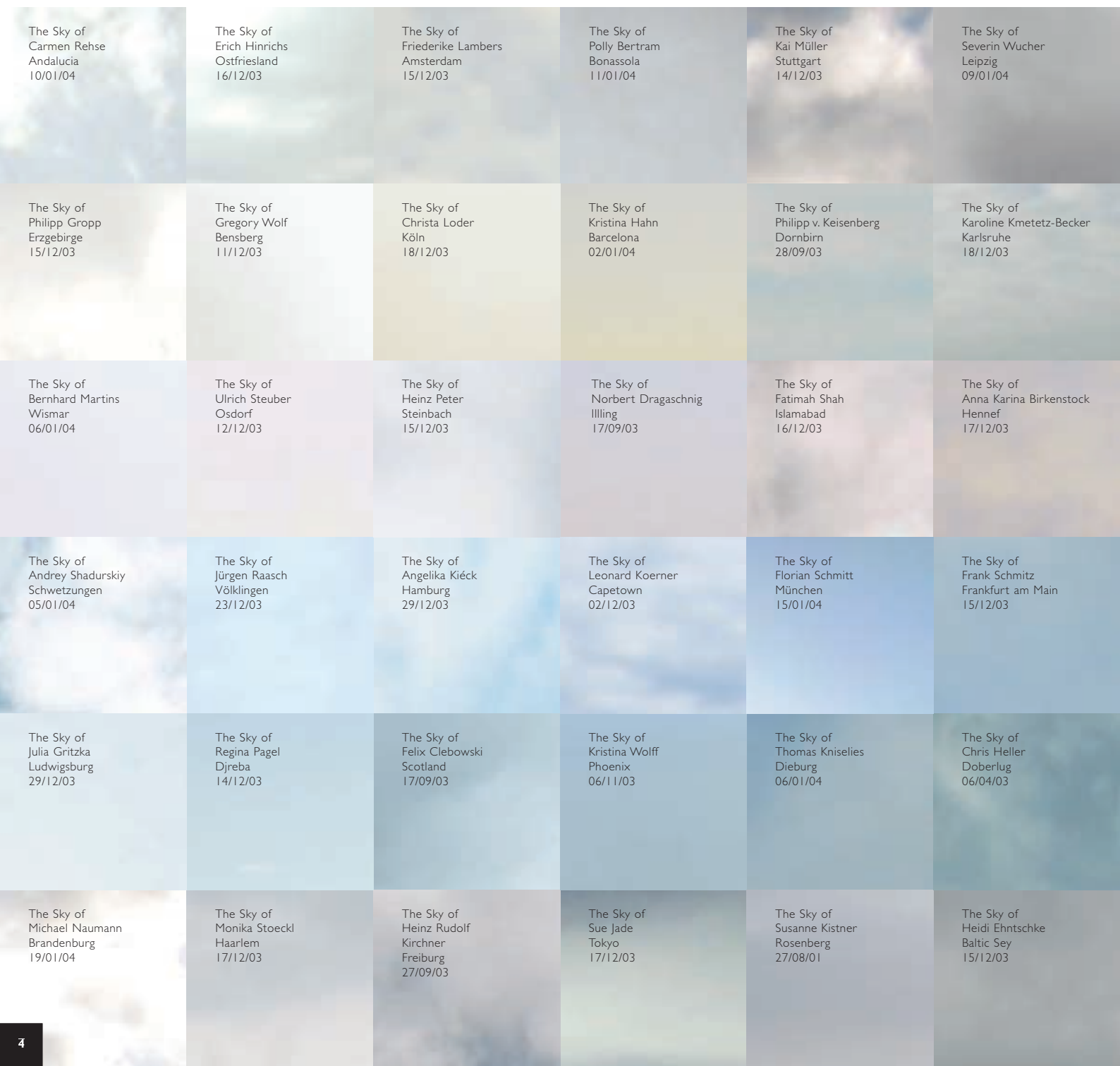
## White is not white

The Strato modular lighting ceiling is equipped with dynamic light: Both brightness level and light colour can be adjusted to produce a very uniform illumination, devoid of any disturbing shadows.

A distinction is made between »Strato Sky« and »Strato Rainbow«. »Strato Sky« produces white light with a colour temperature between 2 700 and 6 000 K.

By means of light regulation, dynamic daylight can be simulated. Alternatively the user can choose his own particular light, depending on choice, work situation or mood, contributing to a general sense of well being. Dynamic light can be used to stage spaces, and has the effect of making different materials appear in the best light. For example, in a fashion shop a winter collection is exposed to a soft warm white light, whilst the summer collection is exhibited in strong daylight white light.

In the design of workplaces, dynamic light adapts itself to new office concepts and promotes a feeling of well being in the workplace.

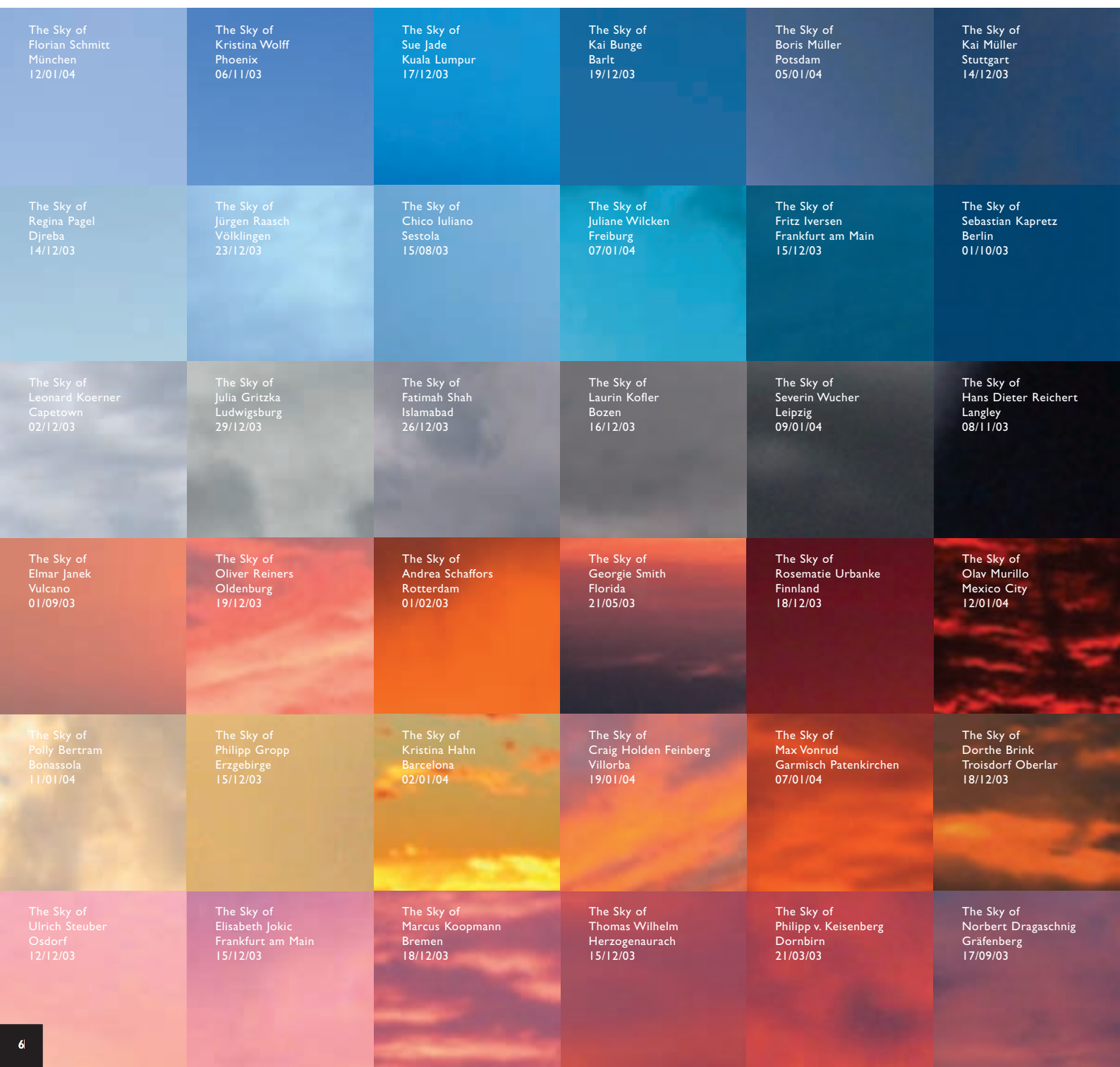




# Strato Rainbow

## Infinite colour spaces

»Strato Rainbow« produces numerous colours of the rainbow. Consequently, the luminaire is suitable for rooms that are used for staging effects: Shops, bars, showrooms, exhibition rooms and lobbies ...





# The dynamics of light

## Light is life

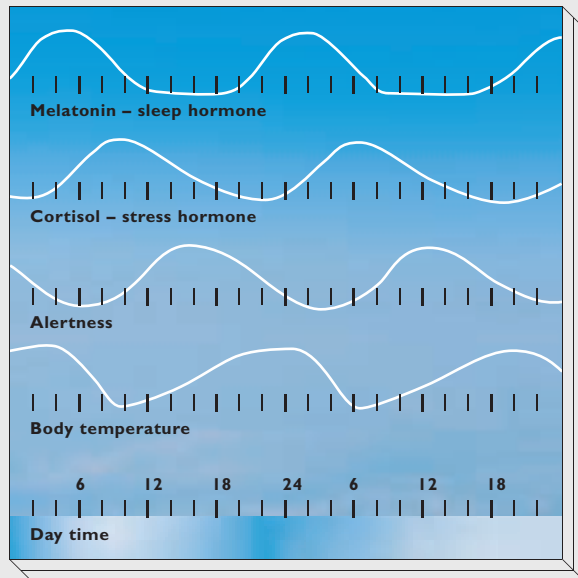
The sun and moon, the rhythm between day and night, the change of the seasons, the weather, temperature and climatic conditions all affect our bodies and have a decisive influence on our moods, emotions, capabilities and motivation. Following nature's example, dynamic light can make a contribution to healthy and stimulating surroundings.

## Example 1: Conference room

In conference facilities, the individual rooms are frequently used for more than one function. Dynamic light adapts itself to these different situations, by either focussing the attention on one person in a presentation, or illuminating the whole room in bright light for a meeting, or providing a warm soft light for a festive evening reception.

## Example 2: Work at night / Control room

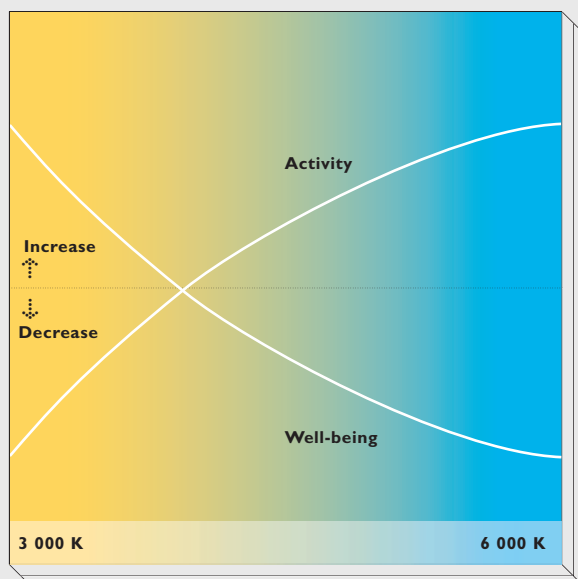
The periodic changeover from day to night have an influence on the human body. During one day the human being experiences various phases of alertness and tiredness, triggered by the influence of light. Used anti-cyclically, dynamic light can help alleviate the



## Biological rhythm

Many functions of the human body are influenced by a daily (circadian) rhythm, which in turn is, determined by the dynamics of daylight.

A change of light temperature and brightness stimulates the production of melatonin (relaxation) or cortisol (activity).



## Light, emotions and moods

The choice of the light colour influences human moods and activities. Warm white light (3 000 K) has a more positive effect on our sense of well-being, whilst daylight white light (6 000 K), has a more stimulating effect.

phases of tiredness, and significantly raise concentration levels. This effect is of particular relevance for all kinds of work carried out at night which require high precision, such as in control rooms, hospitals etc.

### Example 3: Shop

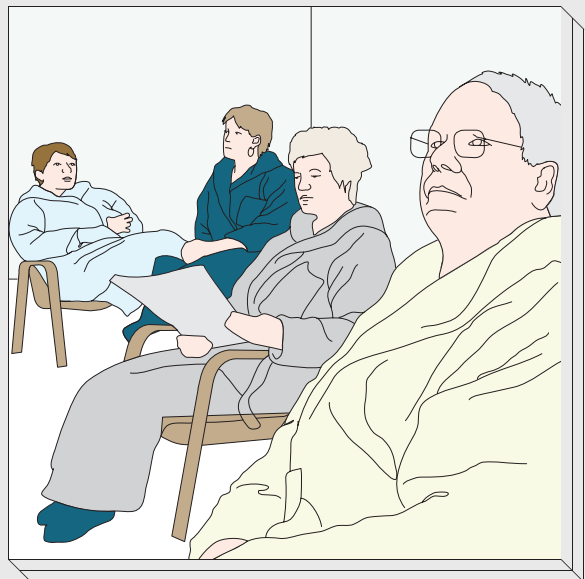
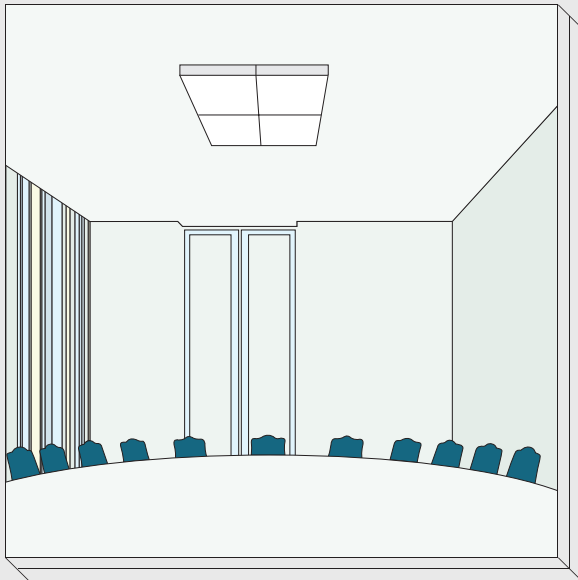
The omnipresent, unchanging artificial light in shopping arcades or malls can generate a monotonous and tiring atmosphere for both customers and employees alike. Furthermore, studies have shown that daylight in retail areas can increase sales significantly.

Gentle, dynamic light scenarios can lend shops a stimulating and activating character – similar to the gradual change of daylight from sunny to cloudy periods.

### Example 4: Healthcare

In 400 years B.C., the Greek physician Hippocrates recognised a link between light deficiency and the occurrence of certain illnesses thus light can also have a therapeutic function, aid a patient's recovery or mood. For example, bright white daylight has the effect of promoting activity, whilst warm white light promotes a feeling of well being.

Dynamic light is thus suitable for applications in ie old people's homes, where it meets the residents' need for higher lighting requirements, but equally a cosy living environment or in therapy centres or fitness facilities located within health resorts.



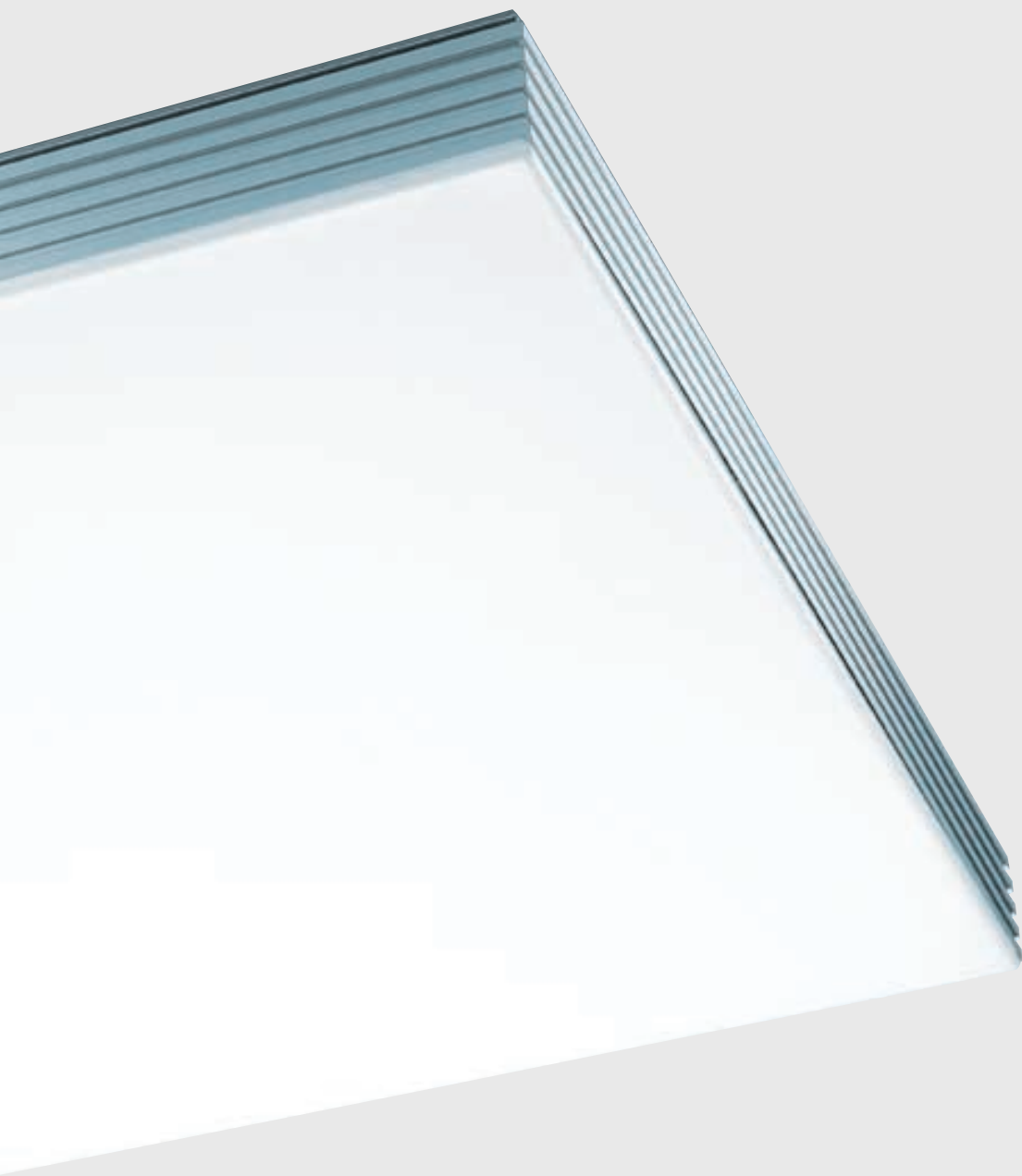
# Pure light

The external design is simple, and only includes the bare necessities. However, materials such as aluminium are used to create a tough, durable, yet lightweight structure.

The interior, on the other hand, uses a new patented technology to mix the light and provide the white plastic cover with an even illumination.

The very low height means that it is ideal for use in rooms with low headroom. The modular construction facilitates simple installation in existing buildings.





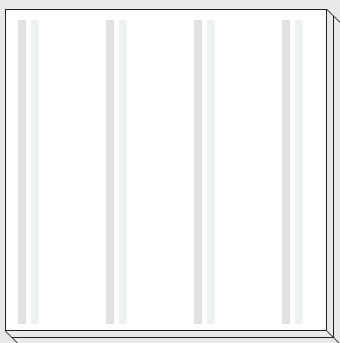
# Operation

The 120 x 120 cm modules are extremely compact thanks to their height of a mere 16.5 cm. Strato is thus able to provide optimal illumination, even in rooms with low ceilings. Furthermore, the modules are also suitable for mounting on walls and floors. The thin design is possible through the use of a new patented light directing system capable of emitting a very even illumination.

The different light temperatures, degrees of brightness and colours of the »Strato Sky« and »Strato Rainbow« are achieved by mixing the light of different coloured TL5 lamps.

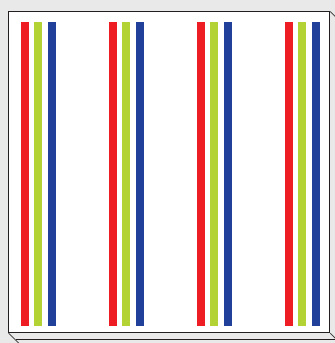
Strato Sky is provided with four pairs of lamps, with colour temperatures warm white and daylight white respectively. All temperatures within this range can be mixed by dimming the lamps accordingly.

Strato Rainbow has four clusters of three TL5 lamps in the colours red, green and blue. Mixing of these colours can produce all colours of the rainbow spectrum.



## Strato Sky

All colour temperatures within the range of 2 700 K and 6 000 K can be produced by dimming each of the four warm white and four daylight white TL5 fluorescent lamps.



## Strato Rainbow

The colours red, green and blue can be mixed to create any colour of the whole rainbow spectrum.

An optional high power Strato Sky version is available based on the 12 (4 x 3) lamp configuration used in Strato Rainbow. The high luminance Strato Sky is fitted with 4 x warm 2 700K + 8 x cool 6 500K lamps.

# Lighting controls

## Light control

To generate dynamic light, the Strato modules are equipped either with HF-R, or digital Dali ballast units. The light colours are controlled independently of one another and mixed to produce the desired ceiling light colour and brightness.

## Trios system

By means of the cost effective and easy-to-install TRIOS system, the user can call up, and manually control stored illumination scenarios via a keyboard.

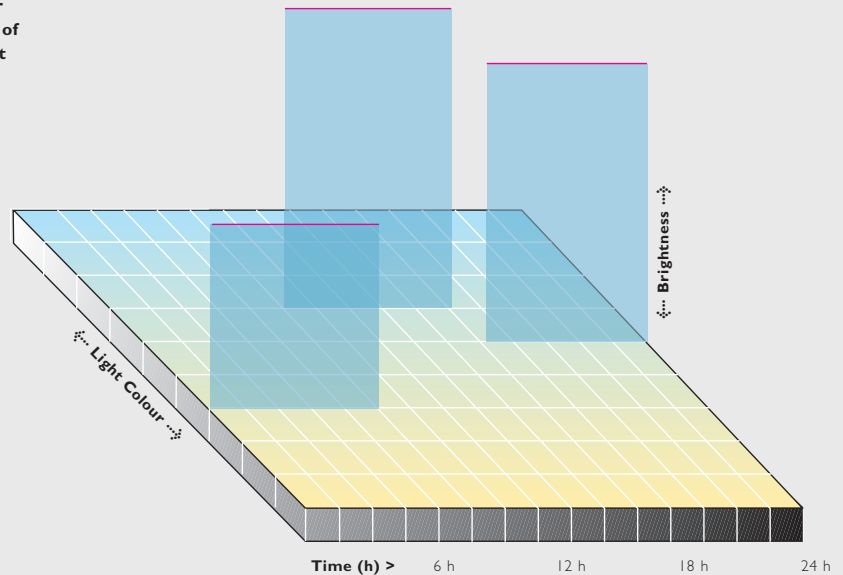
## Scenio 100 system

More complex dynamic sequences can be designed using Scenio 100. A computer is employed to configure individual sequences and transitions from different light colours and levels of brightness. The computer is then no longer required for further operation.

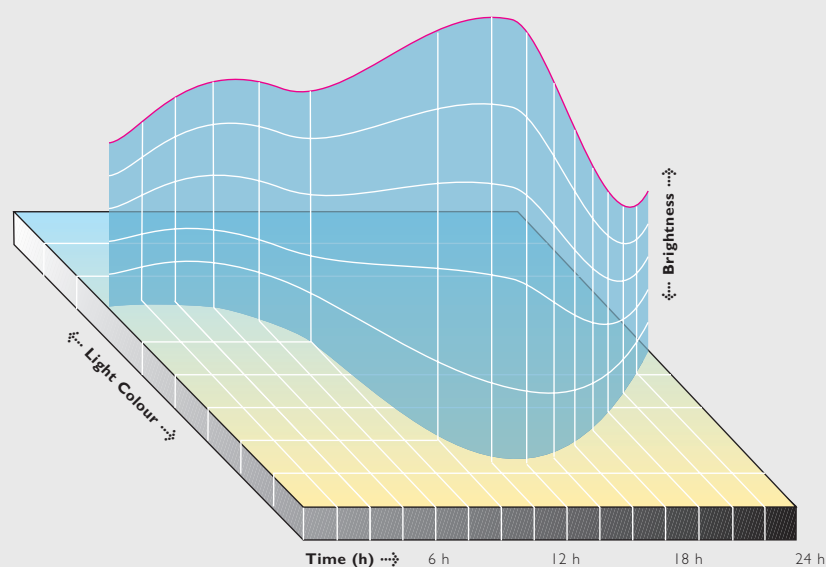
## Manual control

The light from Strato can also be simply regulated by hand for an infinite number of settings via potentiometers. A separate central switch prevents the chosen setting being lost when switched off.

With Trios the user can call up presets of brightness and light colour.



Scenio 100 creates seamless changes in light colour and brightness over a period of time.



# Installation and maintenance

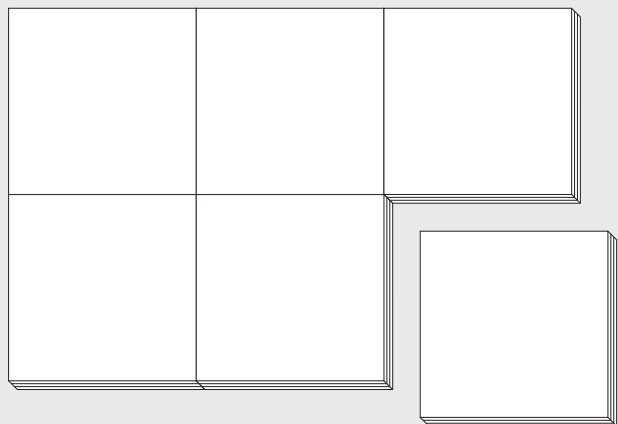
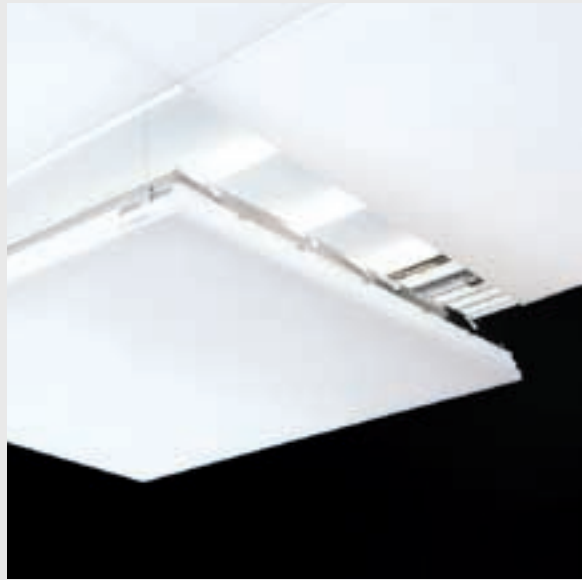
Strato can be suspended by means of adjustable steel wires. The modules are then connected to each other in the operating position. Single modules can be installed using a four-point suspension system.

With appropriate accessories, Strato is also suitable for direct mounting to walls and ceilings.

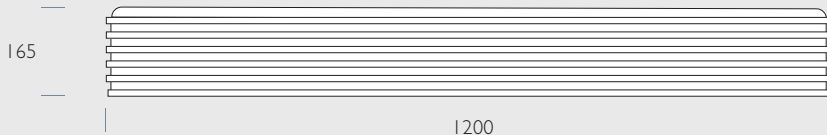
The completely closed construction facilitates installation and maintenance. Each luminaire is supplied with the necessary TL5 lamps. The electrical connections to the power supply connection and the dimmer connections

are accessed without opening the modules at all. For lamp replacement the individual modules can be opened easily using suction cups.

Due to its modular design Strato is flexible and can be adapted to different spaces and changing conditions.



# Technical data

Product family	Strato Sky TPH710	Strato Rainbow TPH710
<b>Dimensions</b> (in mm)		
<b>Specifications</b>		
Lamps	4 x 2 x TL5 28W/827/865	4 x 3 x TL5 28W/red/green/blue
Temperature	2 700 K to 6 000 K	colour compositions of red, green and blue tones including white tones
Gear	Dimmable HF-R or Dali on request	Dimmable HF-R or Dali on request
System wattage	Approx 250 W per module	Approx 380 W per module
Light output ratio (LOR)	> 50%	> 50%
Light distribution	Direct with consistent distribution	Direct with consistent distribution
Weight	30 kg	30 kg
Housing	Aluminium	Aluminium
Optical system	Patented optical system Visible components acrylic	Patented optical system Visible components acrylic
Mounting	Modular system mounted with steel cables. Direct wall or ceiling mounting possible. Mounting accessories to be ordered separately	Modular system mounted with steel cables. Direct wall or ceiling mounting possible. Mounting accessories to be ordered separately
Electrical installation	Plugs accessible from outside	Plugs accessible from outside
IP Class.	IP40	IP40
	Lighting controls including software to be ordered separately according to project	Lighting controls including software to be ordered separately according to project
<b>Ordering (1-10 V)</b>	TPH710 8xTL5-28W/827/865 HFR (Order code 21354200)	TPH710 12xTL5-28W/RGB HFR (Order code 21352800)



# Strato

For more information please contact:

[www.strato.philips.com](http://www.strato.philips.com)

Data subject to change

Printed in The Netherlands 04.2004

3222 635 47371

Concept + Design: jung und pfeffer, Bremen | Amsterdam

Photography: Burkhard Schittny, Hamburg

